

Advanced Governance



5 Sections

- Where/how to find information
- How to interpret legislation
- Situation-based approaches
- Mentoring others
- Turning ideas into legislation

Where to find information

- Online
 - SU and University websites
- Physical records
 - SU and University governance offices

Choosing Effective Keywords

- Keywords for online searches should be:
 - Relatively unique to the document or page you want
 - Fewer than three whenever possible
 - Use acronyms as a last resort only
- If you can't find it easily, it's probably not there
 - Contact the SU or University governance offices

How To Skim Documents

- Save time – don't read the whole thing!
 - Command/ctrl F
 - Use a single, relatively unique keyword
 - Use acronyms as a last resort only
- You can skim through dozens of documents in a matter of minutes!

Interpreting Legislation

- Legislation is an outline of an action that affects a group or a group that performs an action.
 - Look for the nouns and verbs of a clause
 - Check the definitions
 - Be careful of modifiers and conjunctions
- A reference to a document does not enshrine that document!

Conjunctions

- Similar conjunctions are often used interchangeably, but can drastically affect the meaning of legislation.
- “And” has multiple meanings depending on context.
 - Councillors may be elected and nominated
 - Councillors must be elected and nominated
 - Councillors are elected and nominated
- “Or” means one of the listed options are adequate.
 - It can also mean only one of the options is acceptable at a time.

And/Or

- These are often used interchangeably, but can drastically affect the meaning of legislation.
- Councillors must be elected **and** nominated.
- Councillors must be elected **or** nominated.

Situation-based Approaches

- Changing your advocacy approach based on the situation and people involved can increase effectiveness.
- Requires getting advice, listening carefully before speaking, and a bit of trial and error.

Consider Your Audience

- How do they see the world?
- What's important to them?
- Emotion vs. logic
- Know what not to do

Consider Your Audience

- “Having more engaging events will improve student life, decrease feelings of isolation, and bring students back to campus.”
- “Having more engaging events will improve student satisfaction and make us more marketable.”

Consider Your Audience

- “Having higher tuition with needs-based bursaries will help fund the institution while helping those who actually need it.”
- “Having higher tuition will allow us to fund the institution and keep jobs without freezing wages.”

Mentoring Others

- Mentorship involves using your superior knowledge and experience to uplift others, not suppress them.
- Mentorship is ongoing and part of all your interactions with a person, not just limited to specific mentorship sessions.
- Give them the space, time, and encouragement to try things out and make mistakes.

Mentoring Others

- Address ideas, not skill gaps.
- If their lack of skill or knowledge has made the intention of their idea unclear, ask for clarification.
- If appropriate, give information that will help them overcome their skill/knowledge gap in the future.

Turning Ideas into Legislation

- Understand what your idea will do, who it will affect, and what will be needed to carry it out.
- Figure out who has the power to begin enacting that change.
- Figure out who needs to approve the change before it can be enacted.

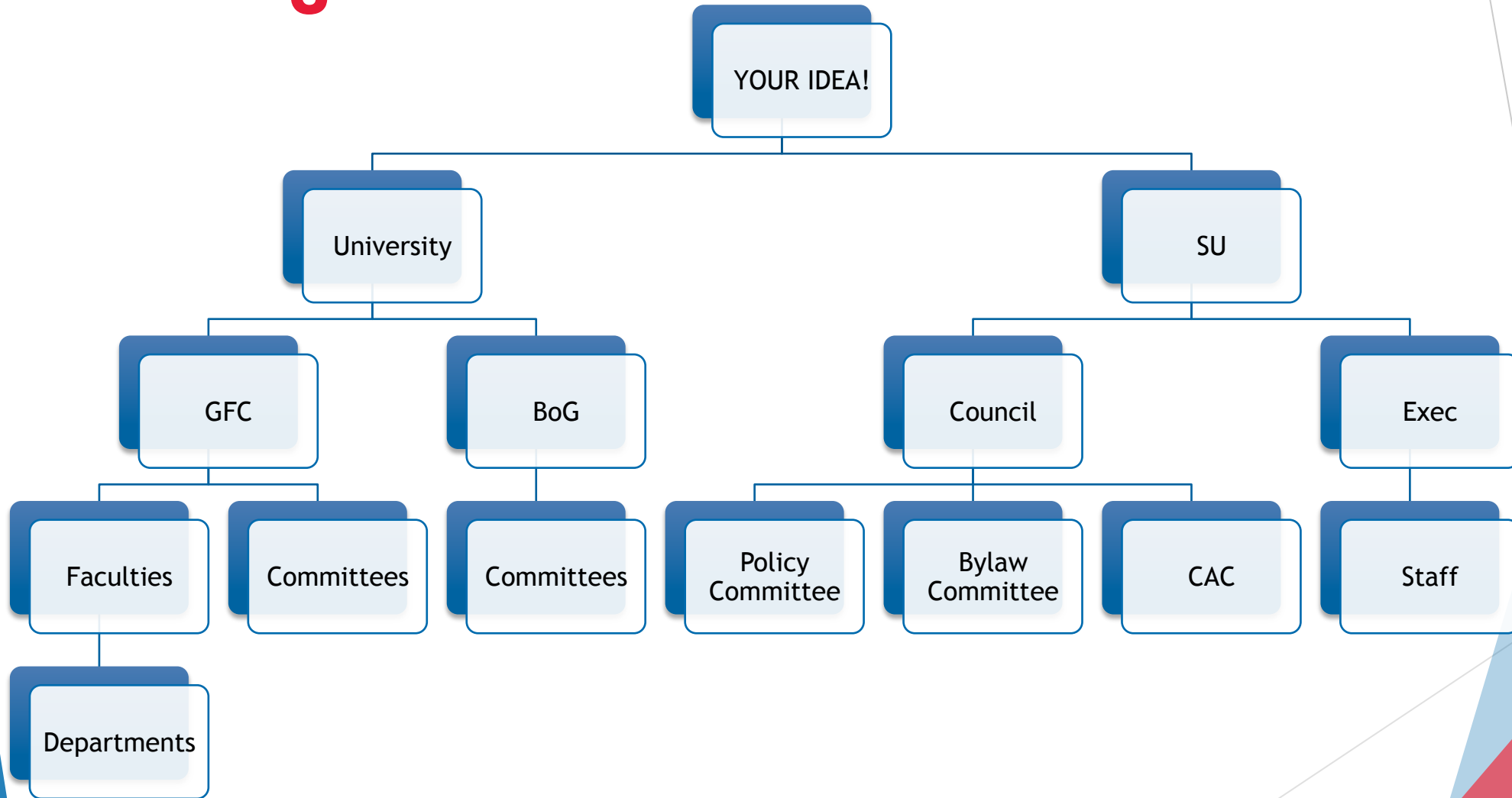
University Legislation

- Is it academic or financial?
- Academic:
 - Does it affect a department, a faculty, or the whole university?
 - Does it affect students, professors, staff, or a combination of them?
 - Does it involve teaching, learning, assessment, or behaviour/conduct?
- Financial
 - Does it involve budgets, property, investments, or a combination of them?

SU Legislation

- Is it operational, legislative, or political?
- Operational:
 - Does it affect a building, service, business, or event?
 - Does it affect Council, staff, or members/customers?
- Legislative
 - Does it affect Council, Executives, elections, or something else?
- Political:
 - What kind of advocacy activity will it give direction to?

SU Legislation



Activity!

Debrief

- What was the easiest part of the exercise?
- What was the most difficult?