

WELCOME

WHY YOU ARE HERE

- *To learn more about the Physical Activity and Wellness (PAW) Centre,*
 - *To understand the status of the project,*
 - *Opportunity to ask questions.*
- *Please remember to fill out your evaluation form.*



BACKGROUND

Approved by student referendum in March 2010, the PAW Centre is a partnership with stakeholders including the Students' Union (SU), Graduate Students' Association (GSA) and Faculty of Physical Education and Recreation (FPER).

The PAW Centre will be a new physical activity and wellness facility with program components including a campus fitness centre, a world-class climbing centre, a variety of student service spaces, and a new home for The Steadward Centre.

The PAW Centre will be approximately 158,000 square feet and constructed as an addition on the south side of the Van Vliet Centre East Wing. The project will include a new social street, which will provide an interior connection between multiple buildings.

The facility will be open to students, faculty, staff, and the community.



UNIVERSITY OF
ALBERTA

SPACE FEATURES

Climbing Centre will be 685.2 square meters (7373 square feet) of space and feature a climbing wall that is 19.5 meters (64 feet) high. The climbing wall will feature multiple levels of bouldering as well as a variety of wall faces for top roping and competitions. The new climbing centre will have male and female locker rooms and a separate street entrance to allow use of the climbing centre outside of PAW Centre hours.

Fitness Centre will be 3188.6 square meters (34,326 square feet) of space, which will be an increase of 2,261 square meters (25,413 square feet) from the current space. The new fitness centre and climbing wall are located on the corner of 114th Street and 87th Avenue and will act as a gateway into the campus. The fitness centre will have south facing glazing which will provide views into and out of the centre as well as filling the space with natural light. A metal screen on the south face will help shade and modulate the light into the space. The Fitness Centre will also have access to the new sunken south plaza.

Student Services Area will be 1203.2 square meters (12,949 square feet) of space. The project includes multipurpose rooms, pro shop, games area, student lounge spaces, and upgraded locker rooms.

Social Street will be 2752 square meters (27,622 square feet) of space. The Social Street acts as the main street for the PAW Centre off of which are located student social lounge spaces, multipurpose rooms, gymnasium, living wall, commercial food vendor and a community kitchen space.

SUSTAINABILITY FEATURES

The PAW Centre will include a number of sustainable features including:

- Targeting a Green Globe rating of Four Globes (LEED GOLD equivalent).
- A living wall in the social street.
- Natural daylight to create a healthier environment for students, faculty, staff and visitors.
- Use of natural, recycled, low-emitting healthy materials for building finishes.
- Control of solar loads through efficient shading and glazing.

GREEN GLOBES

Similar to LEED Green Globes is a methodology and third party certification to assess a buildings sustainability. The objectives of the Green Globes are to:

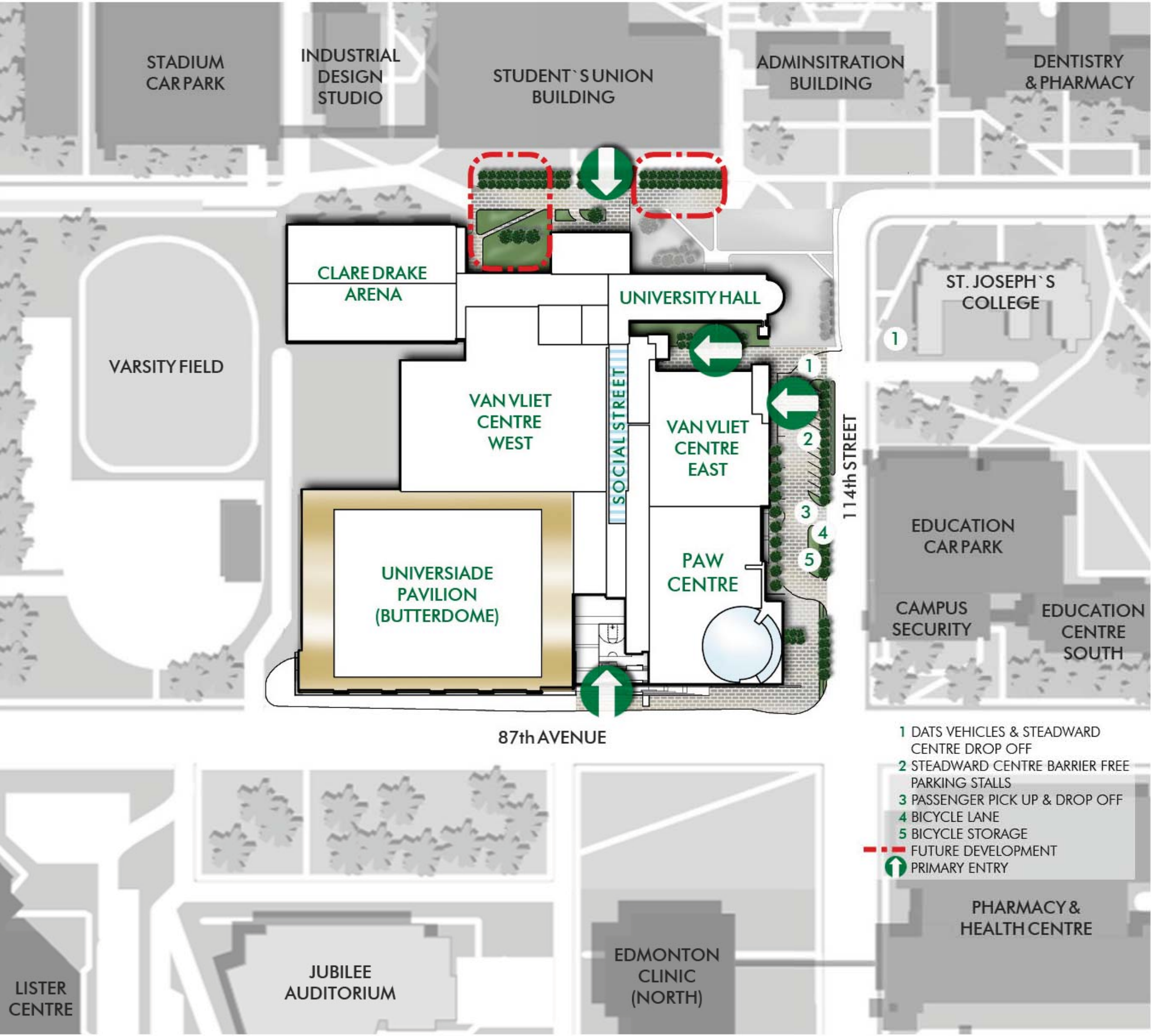
- Evaluate energy and environmental performance of buildings
- Encourage peer reviews of design and management practices
- Increase awareness of environmental issues amongst building owners, designers and managers
- Provide action plans for improvement at varying stages of project delivery
- Provide certification and awards for green building design and management

Green Globes assists in the design of buildings that are energy and resource efficient, achieve operational savings and which are healthier and more comfortable to work and live in.



UNIVERSITY OF
ALBERTA

SITE PLAN



87th AVENUE AND 114th STREET



SOUTH ENTRANCE RENDERING



NORTH ENTRANCE RENDERING



UNIVERSITY OF
ALBERTA

FITNESS CENTRE

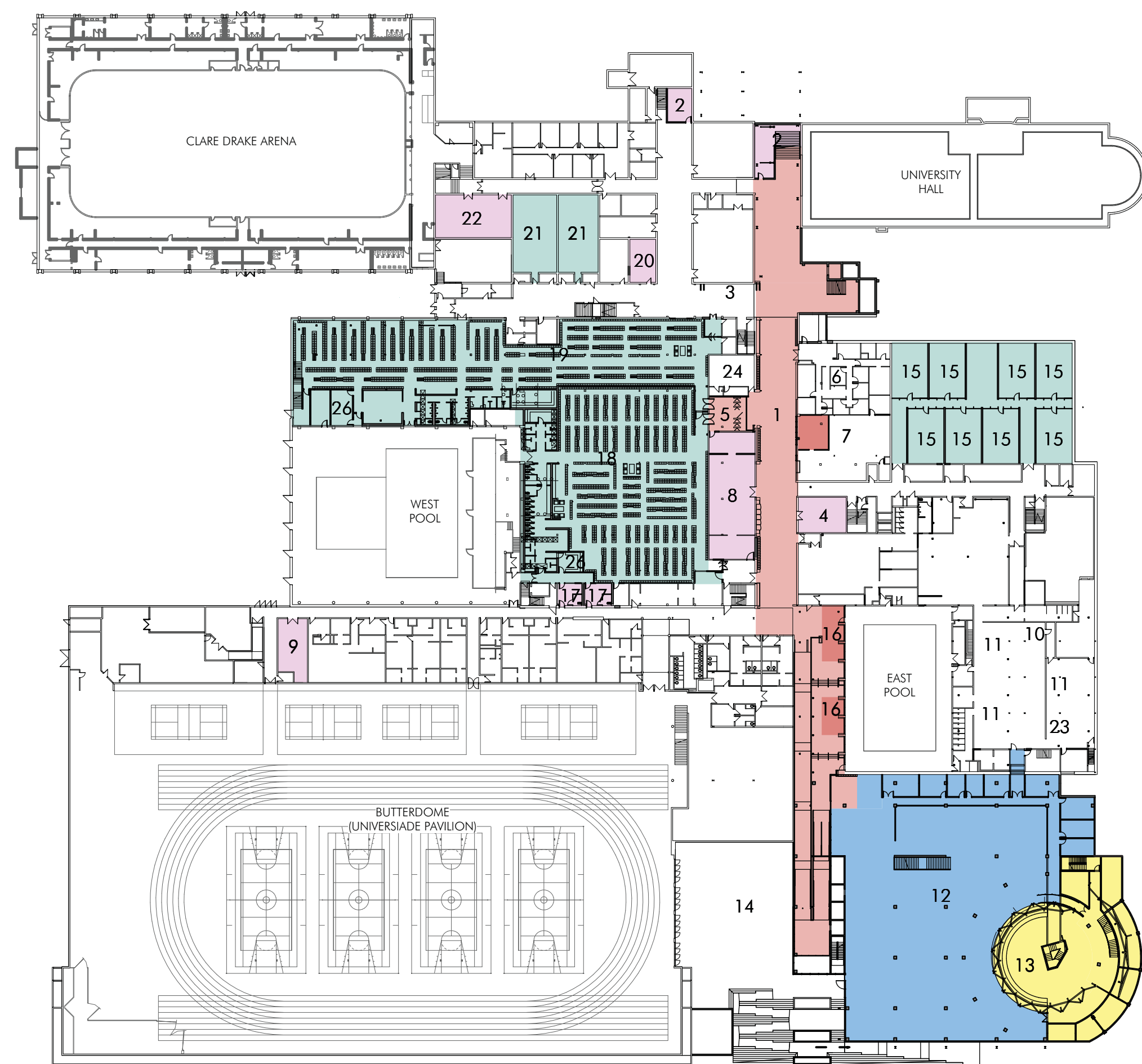


STUDENT LOUNGE/GYMNASIUM



SOCIAL STREET





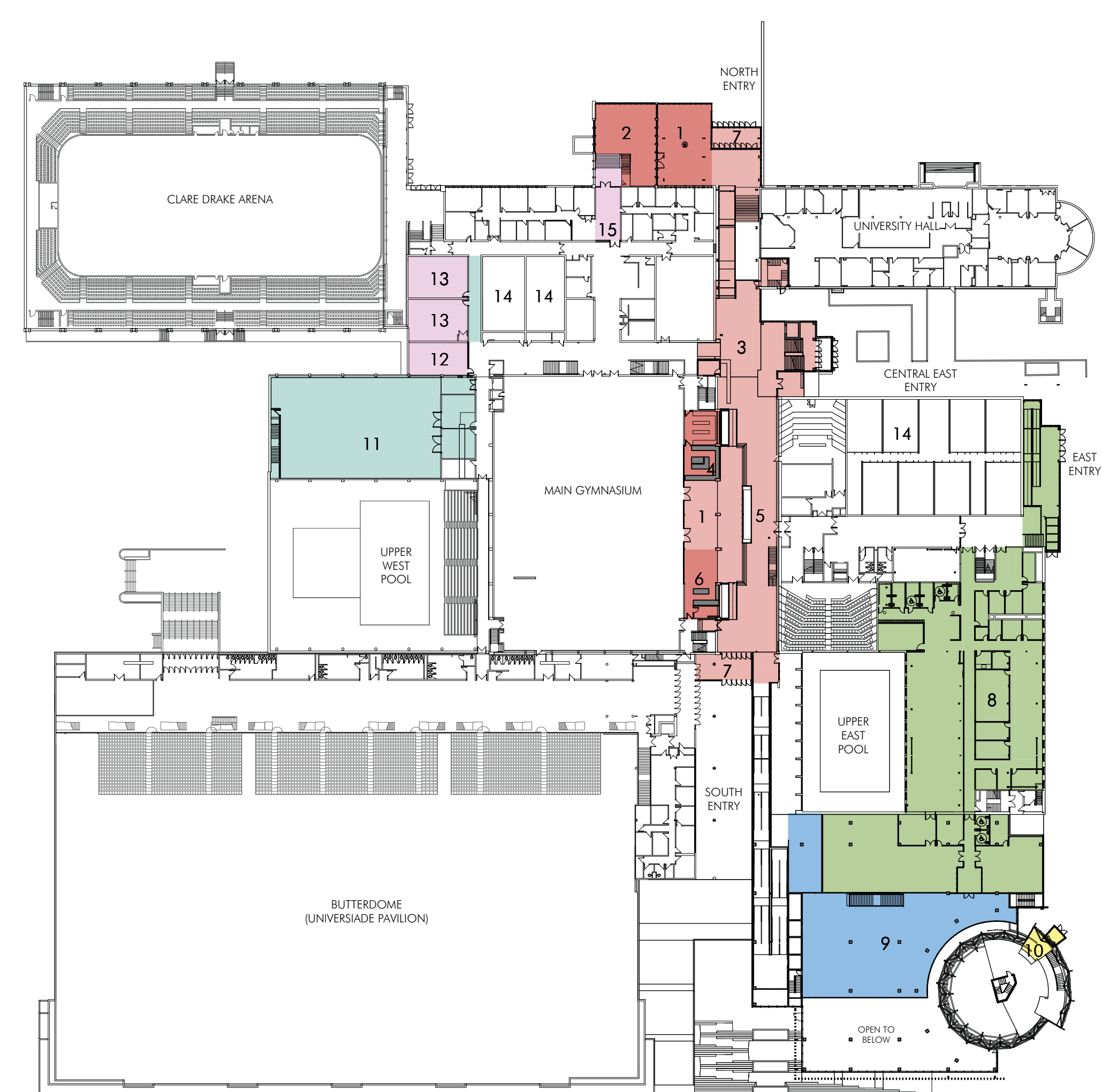
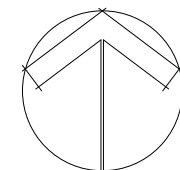
LEVEL 1

SPACE LEGEND

- 1 LOWER CONCOURSE
- 2 BUILDING SERVICES STORAGE
- 3 EXISTING BOOSTER JUICE
- 4 INTRAMURAL PROGRAM OFFICE - REGISTRATION / INFO
- 5 LOCKER AREAS ENTRANCE
- 6 SPORT DEVELOPMENT CENTRE, ATHLETE HEALTH PROGRAM AND ATHLETIC THERAPY
- 7 ACTIVITY REGISTRATION ZONE, STUDENT/FACULTY PRO SHOP
- 8 EQUIPMENT ROOM / DISPENSING / STAFF AREA
- 9 RELOCATED STORAGE
- 10 MEETING ROOM
- 11 STUDIO
- 12 FITNESS CENTRE
- 13 CLIMBING CENTRE
- 14 LOWER EXTERIOR PLAZA
- 15 SQUASH COURTS
- 16 GAMES AREA
- 17 FAMILY CHANGEROOMS
- 18 WOMEN'S LOCKER ROOM
- 19 MEN'S LOCKER ROOM
- 20 PERCS STUDENT OFFICE
- 21 COMPETITION SQUASH COURTS
- 22 VARSITY TRAINING ROOM
- 23 SPIN STUDIO
- 24 MINERVA ROOM (UNCHANGED)
- 25 BIKE STORAGE
- 26 SWIM TEAM LOCKER ROOM

LEGEND

- STUDENT SERVICES
- CONCOURSE
- RENEWED
- RENEWED - ADDITIONAL
- CLIMBING CENTRE
- FITNESS AREA



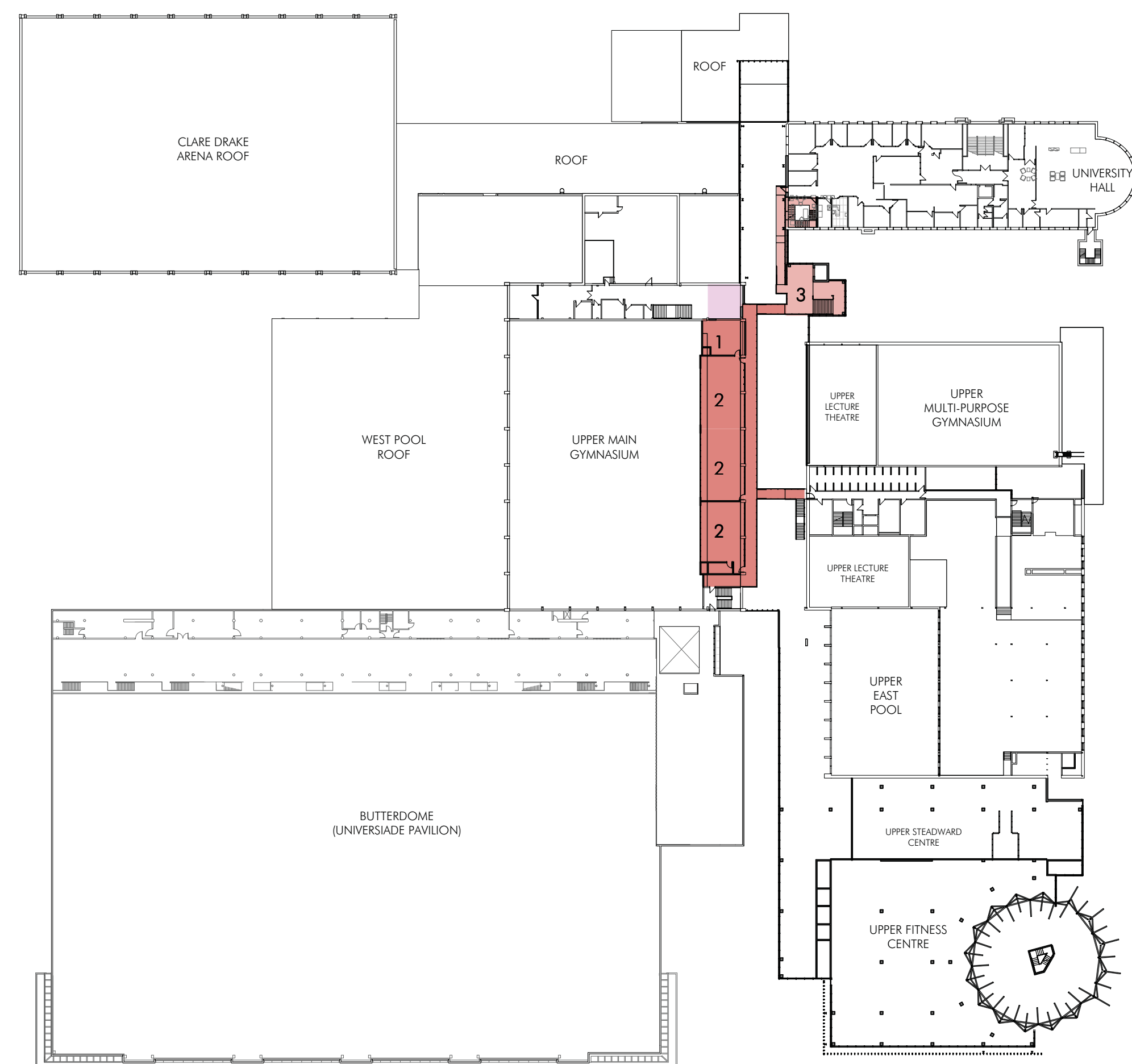
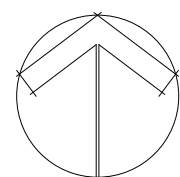
LEVEL 2

SPACE LEGEND

- 1 STUDENT LOUNGE
- 2 GSA LOUNGE
- 3 INFORMATION CENTRE
- 4 FOOD SERVICES VENDOR
- 5 MAIN CONCOURSE (SOCIAL STREET)
- 6 COMMUNITY / TEACHING KITCHEN
- 7 NEW VESTIBULE
- 8 STEADWARD CENTRE
- 9 FITNESS CENTRE MEZZANINE
- 10 CLIMBING CENTRE GRADE ENTRANCE
- 11 DANCE STUDIO
- 12 MEETING ROOM
- 13 CLASSROOM / LAB
- 14 UPPER SQUASH COURTS
- 15 PHYS. ED. FACULTY

LEGEND

- STUDENT SERVICES
- CONCOURSE
- RENEWED
- RENEWED - ADDITIONAL
- CLIMBING CENTRE
- FITNESS AREA
- STEADWARD CENTRE



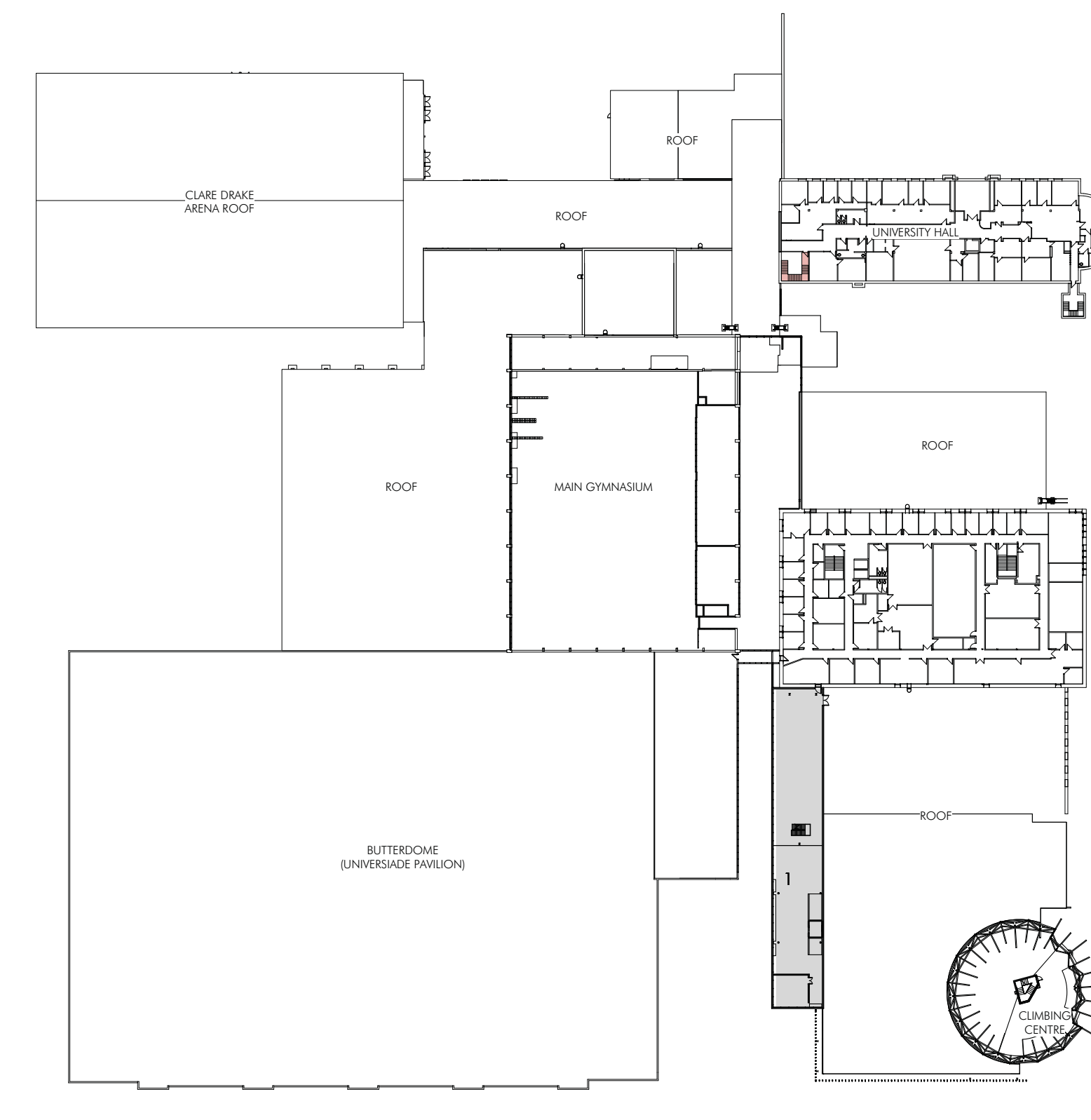
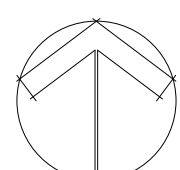
LEVEL 3

SPACE LEGEND

- 1 STORAGE
- 2 MULTI-PURPOSE ROOM
- 3 LINK TO UNIVERSITY HALL

LEGEND

- STUDENT SERVICES
- CONCOURSE
- RENEWED - ADDITIONAL



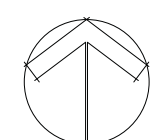
LEVEL 4

SPACE LEGEND

- 1 MECHANICAL PENTHOUSE

LEGEND

- CONCOURSE
- SERVICE



UNIVERSITY OF
ALBERTA

THANKYOU FOR ATTENDING

- *Please remember to fill out your evaluation form.*
- *Information regarding the PAW Project is attached to your evaluation form.*
- *Thank you for coming.*



UNIVERSITY OF
ALBERTA